

# NP208 - STYLE

## SYNCHRONIZED

### REPLACES

DODGE® 100-350 1982-1987

GM® K10/20, V10/25 1981-88

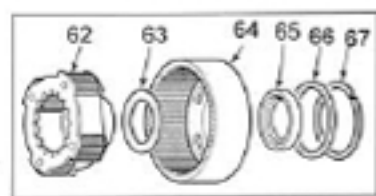
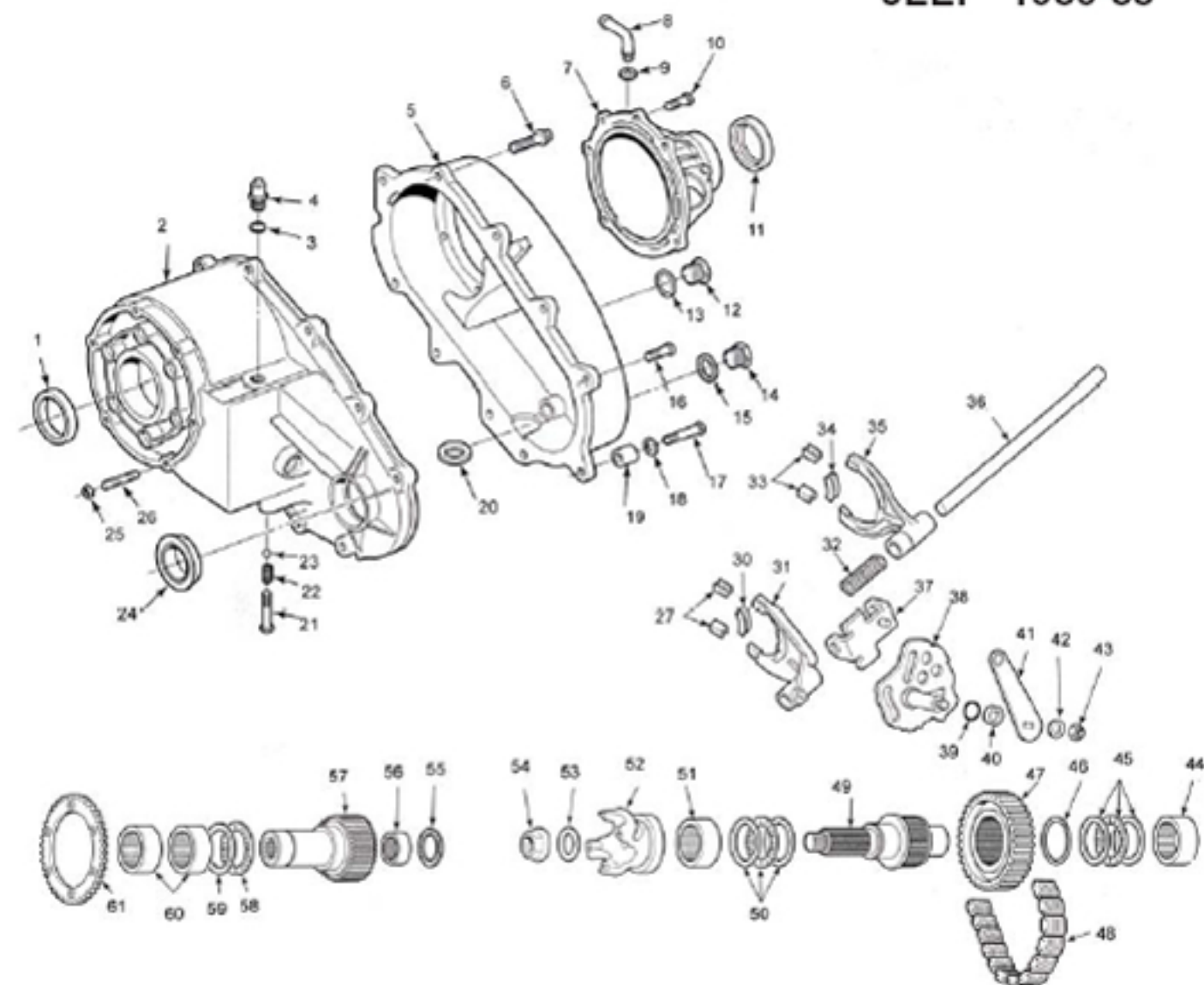
## NON-SYNCHRONIZED

### REPLACES

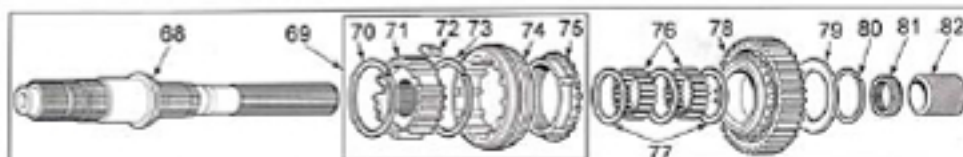
DODGE® 100/350 1980-82

FORD® BRONCO 1980-86, F150/350

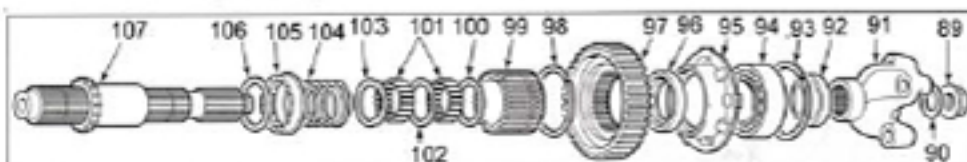
JEEP® 1980-88



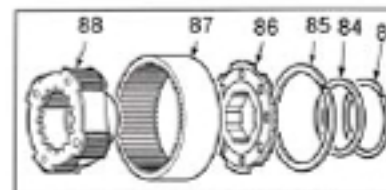
1 PIECE ANNULUS (RING GEAR)



GENERAL MOTORS



FORD - DODGE - AMC



2 PIECE ANNULUS (RING GEAR)